

Semen Lot



MC Sho Me The Money 889K89



MC SHO ME THE MONEY 889K89

UB10536015 Polled UB2 FREE 10/21/2022

BWCC HOT SHOT 192D31

BWCC CENTER SECTION 7F7

MC SHO TIME 313H30

R10475474

BWCC MS DOC 7D6

MC SPECIAL FORCES 924Y4

RBM MS SPECIAL FORCES 313A

RBM MS RITE DIRECTION 313X3

BWCC BIG TOWN 192B16

MC BOOM TOWN 541F4

MC MS BOOM TOWN 889H85

UB10479811

MC MS RESOURCE 541A4

BWCC STRETCH 468D42

MC MS STRETCH 889G19

MC MS IGNITION 889D62

Selling: A total of twenty-five (25) straws of semen on Sho Me The Money for \$1000 per straw.

BW	AWW	AYW	SC	
69	686	1352	36.4	
REA	RE/100	Fat	IMF	
15.8	1.17	0.29	6.1	
HP	Stay	BB	NC	Term
8.68	2.76	0.60	0.13	6.02
3%	15%	25%	20%	1%

Bos Indicus: 25% Bos Taurus: 75%

BW	WW	YW	Milk	TM	SC	REA	IMF
1.3	57	102	8	37	0.8	0.91	0.55
80%	1%	1%	55%	2%	25%	1%	4%

This is a "first come, first serve" sale where any buyer can take from one (1) straw up to twenty-five (25) straws depending on availability and number of straws previously sold at the time of contact. Once this allotment is spoken for semen sales for Sho Me The Money will close for the remainder of this spring and summer.

- Sho Me The Money created more buzz at the recent Mound Creek Bull Sale than any previous animal in their illustrious history, and now is the **\$300,000 record setting, high selling bull of the Brangus breed!**
- He is massively constructed, wide based, big bodied, long spined, huge hipped, super easy going, and wowed the crowd in this elite sale of super studs.
- He froze high quality semen at 13 months of age and cranked up semen production again immediately after his sale.
- He's a definite copy of his incredible sire MC Sho Time 313H30 whose 16 progeny at the Mound Creek Sale averaged a record setting \$48,844!
- Sho Me The Money truly a "spread bull" with his 69 lb. actual birth weight moving to 1352 lb. yearling honors while gaining 4.03 lbs per day.
- He outranked all others in the Mound Creek sale of super stars with combined ratios of 118% for weaning, 116% at yearling, 112% for REA, and 120% for IMF.
- Fittingly so, he offers SEVEN TRAITS in the TOP 4%, perfectly blending the antagonistic traits of fertility, performance, maternal value, and carcass merit predictors still maintaining moderate calving ease.



MC Ms Boom Town 541F4

Semen Lot



MC A Plus 468J20



MC A PLUS 468J20 - ET

UB10507115 Polled UB2 FREE 12/1/2021

MC BOULDER 889Z14
 BWCC MONUMENT 10D7
MC PRIME PLUS 889G52
 R10449881 BWCC MS RESOURCE 10A10
 BWCC CROSS FIT 541B28
 MC SHE'S FIT 889F6
 MC MS DREAMLAND 889W15
 S A V CHILL FACTOR 1418
 BWCC SLICK 7B
MC MS SLICK 468E22
 UB10357269 BWCC MS FLIGHT DECK 7Z
 MC REVELATION 129T
 BWCC MS REVELATION 468Y12
 MISS BRINKS CADENCE 468G15

Selling: A total of forty (40) straws of semen on A Plus for \$250 per straw with a minimum purchase of four (4) straws.

BW	AWW	AYW	SC	
70	629	1197	39.4	
REA	RE/100	Fat	IMF	
15.5	1.17	0.38	6.2	
HP	Stay	BB	NC	Term
7.27	2.48	0.62	0.12	4.64
10%	20%	25%	30%	4%

BW	WW	YW	Milk	TM	SC	REA	IMF
0.7	40	66	9	29	1.0	0.53	0.71
60%	10%	15%	45%	15%	15%	10%	1%

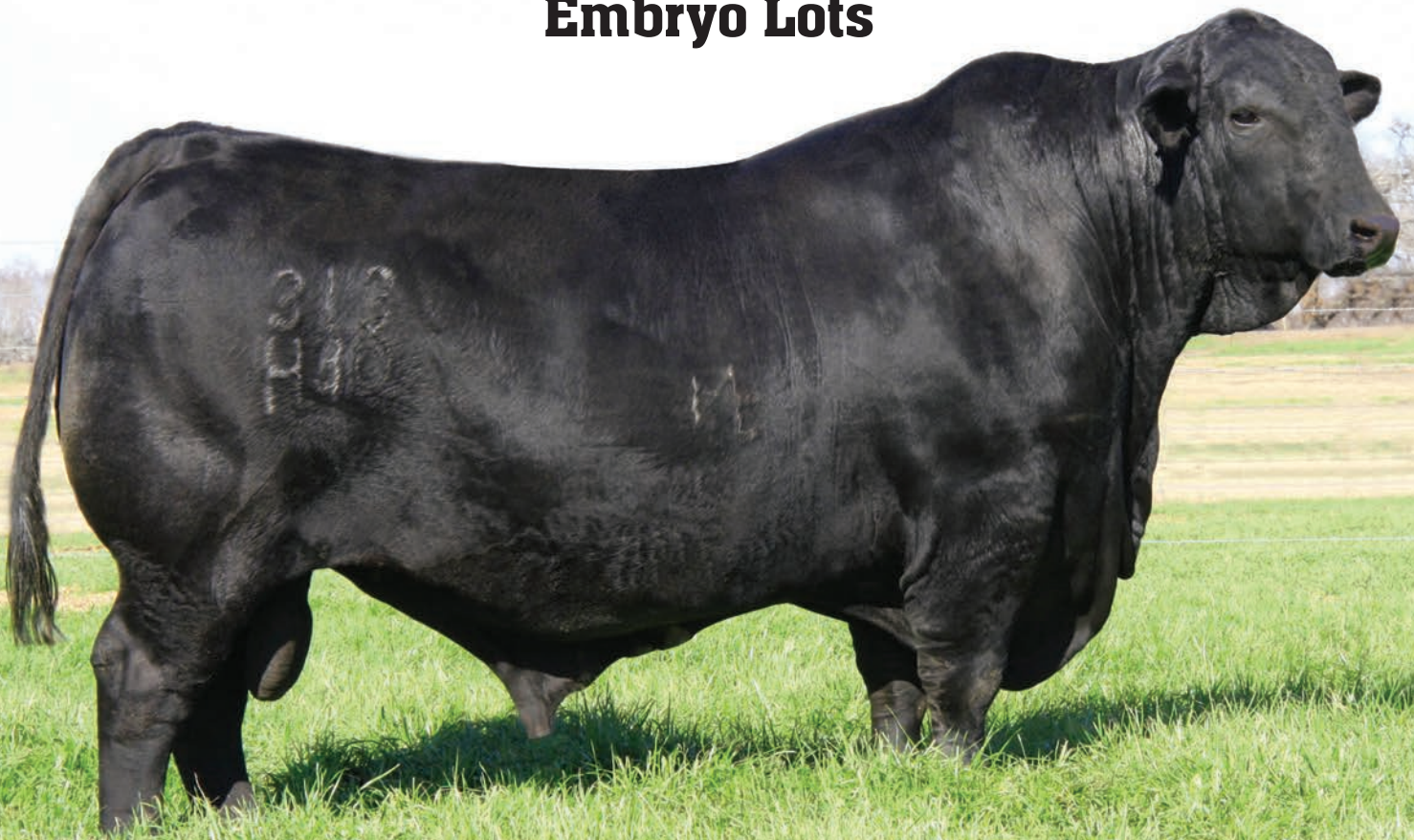


MC Ms Prime Plus 468L8

This is a "first come, first serve" sale where any buyer can take from four (4) straws up to forty (40) straws depending on availability and number of straws previously sold at the time of contact. Once this allotment is spoken for semen sales for MC A Plus 468J20 will close for the remainder of this spring and summer.

- A Plus was the Mound Creek sale standout in 2023 and became our \$155,000 selection due to his naturally great looks, pedigree quality, genomic value, and measured data set.
- Additionally, A Plus is the embryo brother to the \$87,500 MC Ms Prime Plus 468L8, the big bodied, stout featured heifer that previously measured a high prime IMF value of 9.2%.
- Their sire, MC Prime Plus 889G52 probably offers the highest proven IMF value in Brangus earning an astounding 1.15% IMF EPD value!
- A Plus is an easy natured herd sire that is excellent in a pasture breeding environment and never has a day one can't imagine him lining up in the show barn.
- He is big bodied, perfectly sound, wide tracking, square at all corners, easy fleshing, and ideal in a blend of looks and values to positively move any breeding in the breed.
- A Plus has ELEVEN TRAITS or INDEXES in the TOP 25%, or higher, blending fertility with ideal performance, off the charts carcass merit predictors, extra scrot, and breed average birth weight.

Embryo Lots



MC Sho Time 313H30



EMBRYO LOT 541H30 X 313H26

Registration Pending Polled UB2 Pedigree Free

Selling: Twenty (20) total embryos to be divided in packages of five (5) embryos per package.

BWCC MONUMENT 10D7
 BWCC MERGER 468F9
MC SANTIAGO 541H30 BWCC MS OVERLOAD 468D22
 UB10480181 S A V RESOURCE 1441
 MC MS RESOURCE 541A4
 MC MS ROCK STAR 541X10
 BWCC HOT SHOT 192D31
 BWCC CENTER SECTION 7F7
BWCC MS WIDE CENTER 313H26 BWCC MS DOC 7D6
 R10475470 MC SPECIAL FORCES 924Y4
 RBM MS SPECIAL FORCES 313A
 RBM MS RITE DIRECTION 313X3

HP	Stay	BB	NC	Term
7.46	2.86	1.49	0.15	4.11
10%	10%	10%	5%	4%

BW	WW	YW	Milk	TM	SC	REA	IMF
1.1	43	71	8	30	1.1	0.50	0.44
70%	4%	10%	55%	10%	10%	10%	4%

These are priced at \$750 per embryo. They are IVF embryos, and each is a Grade 1.



RBM Ms Special Forces 313A

Buyer can take one package to four packages depending on the availability of remaining embryos at time of contact. Grassy Lake guarantees one pregnancy per package if transferred by a qualified embryo technician.

- Rarest of genetic offering and one to get in line to own!
- At the recent Mound Creek Sale, the three embryo brothers Sho Time, Sho Boat, and Sho Nuff collectively sold 27 progeny with an off the charts sale average of \$37,722!
- The sale highlights were the \$300,000 Sho Me The Money, the \$200,000 MC Princess Diana 129L22, the \$60,000 MC Hammer Time 129L10, \$47,500 MC Ms Sho Time 896L3, \$47,500 MC Sho Time 952L2, and the \$45,000 MC Curtain Call 896K6.
- The "Sho Brothers" now have the breed buzzing and **these embryos mark the rare opportunity to purchase genetics from three embryo sisters to Sho Time, Sho Boat, and Sho Nuff!**
- The sire of these embryos is the big bodied, easy fleshing, soggy made Santiago who is a direct son of the \$1,000,000 earning donor MC Ms Resource 541A4.
- Note, the pedigree calculated EPD values of these embryos post ELEVEN TRAITS in the TOP 10% of the breed! Yes, you read that correctly!

Embryo Lots



EMBRYO LOT 541H30 X 313H24

Registration Pending Polled UB2 Pedigree Free

HP	Stay	BB	NC	Term
7.43	2.81	1.25	0.15	3.99
10%	10%	10%	5%	4%

BW	WW	YW	Milk	TM	SC	REA	IMF
0.6	43	71	9	31	1.1	0.46	0.37
55%	4%	10%	45%	5%	10%	15%	10%

BWCC MERGER 468F9
MC SANTIAGO 541H30
 MC MS RESOURCE 541A4
 BWCC CENTER SECTION 7F7
BWCC MS WIDE CENTER 313H24
 RBM MS SPECIAL FORCES 313A

Selling: Three (3) embryos from this noted mating and two (2) embryos from the just noted mating of 541H30 X 313H26 for a total of five (5) embryos.

These are priced at \$750 per embryo, are IVF embryos, and each is a Grade 1. Grassy Lake guarantees one pregnancy if transferred by a qualified embryo technician.

- Another herd favorite and full sister to the "Sho Brothers".
- These embryos are full sibling embryos "in blood" to the previous noted embryos for 313H26.
- This young donor's first calf sold in our Fall 2023 Online Sale for \$28,000 and was the pick of our fall born heifers.
- Her mating to Santiago is fantastic and he brings the genetic punch from the \$1,000,000 income earning donor MC Ms Resource 541A4.



MC Santiago 541H30



EMBRYO LOT 541G30 X 313H16

Registration Pending Polled UB2 Pedigree Free

HP	Stay	BB	NC	Term
8.47	2.75	0.98	0.14	4.42
4%	10%	15%	10%	2%

BW	WW	YW	Milk	TM	SC	REA	IMF
1.7	46	78	9	32	1.0	0.69	0.40
85%	3%	3%	45%	4%	15%	2%	5%

BWCC BIG TOWN 192B16
MC FIVE STAR 541G30
 MC MS RESOURCE 541A4
 BWCC CENTER SECTION 7F7
BWCC MS WIDE CENTER 313H16
 RBM MS SPECIAL FORCES 313A

Selling: Three (3) embryos from this noted mating and two (2) embryos from the noted mating of 541H30 X 313H26 for a total of five (5) embryos.

These are priced at \$750 per embryo, are IVF made, and each is a Grade 1. Grassy Lake guarantees one pregnancy if transferred by a qualified embryo technician.

- She's the third donor represented from our full sisters to Sho Time, Sho Boat, and Sho Nuff.
- The sire of these embryos is the \$160,000 Five Star who sired the \$50,000 MC Ms Five Star 10L2 who many felt was the top pick in the recent Mound Creek Sale that included the \$200,000 Sho Time daughter MC Princess Diana 129L22.
- Pedigree calculated EPD values with ELEVEN TRAITS in the TOP 15%!



MC Five Star 541G30

Embryo Lots



EMBRYO LOT 948J18 X 10J2

Registration Pending Polled UB2 Pedigree Free

These are priced at \$400 per embryo, are IVF embryos and each is a Grade 1.

HP	Stay	BB	NC	Term
6.89	2.54	0.30	0.13	5.31
15%	15%	20%	15%	1%

BW	WW	YW	Milk	TM	SC	REA	IMF
0.2	49	84	7	32	1.0	0.73	0.59
45%	1%	1%	65%	4%	10%	1%	1%

BWCC BIG LAKE 111F4
MC TABLE TOP 948J18
 MC MS CHILL FACTOR 948D5

BWCC PAPILLON 458G
SHCC MS PAPILLON 10J2
 BWCC MS HOT SHOT 10G17

Selling: Twenty-five (25) total embryos to be divided in packages of five (5) embryos per package.

Buyer can take one package to five packages depending on the availability of remaining embryos at time of contact. Grassy Lake guarantees one pregnancy per package if transferred by a qualified embryo technician.

- Probable EPD powerhouses and promises to be the buy of this sale
- We have a set of these calves on the ground and they are huge topped, big hipped, plenty of rib, and sure eye popping, just like their sire.
- Their dam is a big EPD donor sired by the \$100,000 BWCC Papillon 458G and out of the elite donor BWCC Ms Hot Shot 10G17 who was the pick of her entire calf crop at Blackwater Ranch. She is now residing at Mound Creek.
- A full sib to 10J2 was the high selling female at Bo Herndon's 2022 Sale!



HF Ms Papillon 10J3



EMBRYO LOT 313J6 X 889J30

Registration Pending Polled UB1 Pedigree Free

These are priced at \$500 per embryo, are IVF embryos and each is a Grade 1.

HP	Stay	BB	NC	Term
6.96	3.07	2.26	0.17	4.58
15%	4%	3%	2%	2%

BW	WW	YW	Milk	TM	SC	REA	IMF
1.4	41	74	8	29	0.83	0.71	0.53
85%	10%	4%	55%	10%	20%	2%	2%

S A V RESOURCE 1441
SHCC NATURAL RESOURCES 313J6
 BWCC MS MCQUEEN 313G2

MC STEALTH 129H25
MC MS STEALTH 889J30
 MC MS SLICK 889F38

Selling: Ten (10) total embryos to be divided in packages of five (5) embryos per package.

Buyer can take one or two packages depending on the availability of remaining embryos at time of contact. Grassy Lake guarantees one pregnancy per package if transferred by a qualified embryo technician.

- Outstanding sire and dam mating combination blending the \$75,000 Natural Resources with the outstanding Stealth daughter whose sister brought \$22,000 in recent Mound Creek Sale.
- This 889J30 donor is a personal favorite of Tracy, as is the incredible donor dam of Natural Resources.
- BWCC Ms McQueen 313G2 is McQueen's finest daughter and a also a direct daughter of the \$120,000 RBM Ms Special Forces 313A, also the dam of Sho Time, Sho Boat, and Sho Nuff.



SHCC Natural Resources 313J6